

## Arranging Your Hardware

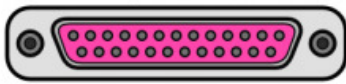
Most users store their PC system unit under the counter, especially as most PCs these days are mini-towers or Small Form Factor desktops. The cash drawer can be stored on top of the counter, or under the counter, with the receipt printer on top of the counter next to your monitor. It is best to keep the barcode scanner stored on its side when not in use, so you don't put undue strain on the connecting cable where it enters the scanner housing.

## Knowing your PC Ports

Before connecting any of the hardware, knowing your computer ports is important. Your PC should have commonly used ports listed below:

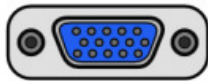
### Parallel Port

Used for printers and data.



### VGA Port

For External Monitor



### Serial Port

Used for serial devices such as NCR Printers, Weight Scale, or Pole Display



### USB Port



#### USB A

Used for any device that use usb conntor

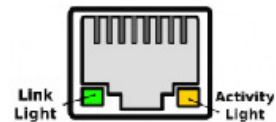


#### USB B

Used for Cannon Printer

### Ethernet / RJ45

Used to connect to internet and intranet networks at high speed.



### Power Connector



### PS/2 Port

Mouse Keyboard



1. The parallel port is usually used for printers and data transfer. Connecting Your Barcode Scanner
2. The VGA stands for video graphics array. Thus, the VGA port should connect to the monitor.
3. Usually the computers we sent out have one to two serial ports. These serial ports are used for receipt printers, kitchen printers, weight scales, and pole displays.
4. Among different kinds of USB ports, there two kinds of USB ports we will use often. You can find USB A in the front or at the back of your PC. The USB B you will find it on your Cannon label printer.
5. The PS/2 ports are usually used for keyboard and mouse. If you have a keyboard or a mouse using USB connection, you won't need to use these two ports. However, if you have a scanner that has a PS/2 connector, you should connect the scanner to the keyboard port. Similar connection will serve the credit card reader.
6. The Ethernet connector allows you to connect your CAT5 cable; thus, you are able to connect to the internet.
7. Last but not least, please don't forget to connect the power cord to your computer.

## Connecting Your POS Hardware

### PS/2 Keyboard Wedge Scanners

1. With the PC turned off completely:
2. Remove the scanner from the packing materials.
3. Attach the Y-cable male end of the scanner to the PC keyboard PS/2 Port.
4. Connect the keyboard cable from the rear of your PC and plug the keyboard's male ps/2 connector into the female branch of the scanner's Y-cable as shown in Fig.1 below. Now your PC will receive both keyboard commands and data from your barcode scanner.

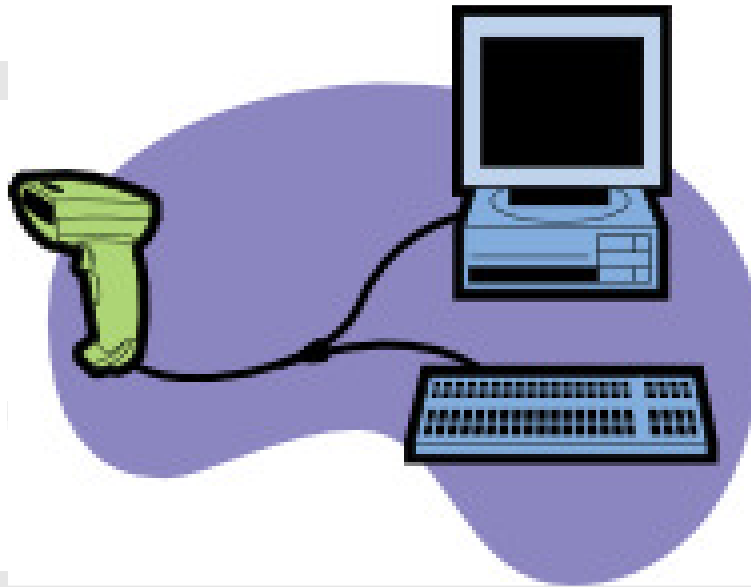


Fig.1: PS/2 keyboard wedge scanner connection.

### USB Scanners

Wait until your PC on, and your windows operating system is fully loaded, and your mouse pointer is no longer and hourglass icon, then simply plug your USB scanner into any available USB port and allow a moment for windows to recognize your scanner.

You can always check your scanner by going to any program such as notepad, wordpad (click on the windows start button, choose programs, then accessories and then notepad or wordpad), or word and scanning any item. You'll see the barcode as a series of numbers.

### PS/2 Credit Card Reader

1. With the PC turned off completely:
2. Remove the credit card reader from the packing materials.
3. Attach the Y-cable male end of the credit card reader to the PC keyboard PS/2 Port or to the scanner if you have one.
4. Connect the keyboard cable from the rear of your PC and plug the keyboards male ps/2 connector into the female branch of the credit card reader Y-cable as shown in Fig.3 below. Now your PC will receive all credit card reader, keyboard commands and data from your barcode scanner.

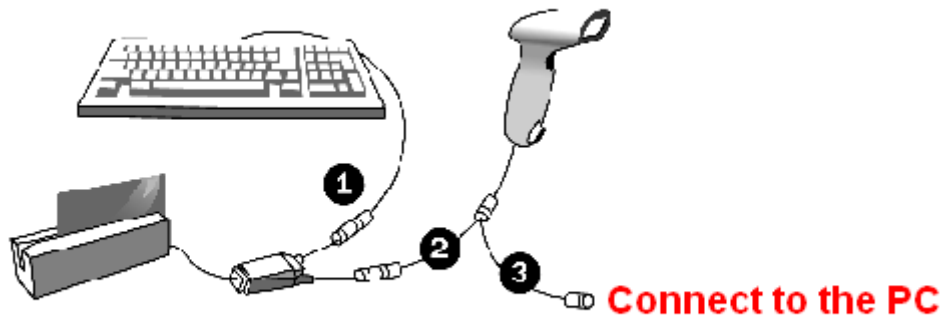


Fig.3: PS/2 Credit Card Reader connection with both keyboard and barcode scanner.

### USB Credit Card Reader

If you have a USB credit card reader, then you can just plug it in one of the USB ports on your computer when your computer is off.

## Connecting Your Receipt Printer

Remove the receipt printer from the packing materials. You will see a printer port on back of the printer. Next to the printer port will be a small socket which will look exactly like a wall telephone plug. The cable from the cash drawer will go into this plug.

Connect one end of your printer cable (supplied by us) to the back of the printer. Connect the other end to the proper printer port on your PC.

Your printer cable may have:

A 9 hole female connector on both ends or

A 25 pin male connector on the end that connects to the printer, and a 9hole female connector that connects to the PC or

A Centronics parallel connector that connects to the printer on one end and to the PC parallel 25pin printer port on the other end or a USB printer connector cable.

A roll of receipt paper should have shipped with your printer; you can order additional rolls of paper and or ribbons via our website.

The figure below shows the back of a NCR A794 printer. The serial port should connect to your computer via a DB9 female cable. The RJ11 port (used for phone line) should connect to the cash drawer.



**Connect to COM Port on PC**

**Connect to Cash Drawer**

Fig. 2: Back View of the NCR A794 Receipt Printer.

**Setting up your POS receipt printer, follow these steps:**

1. Plug in your receipt printer to the LPT1 parallel, COM or USB port on your PC.
2. Insert a roll of receipt paper into the printer as described in your printer user manual.
3. Insert the receipt printer print cartridge as described in your printer user manual if your printer is not a THERMAL PRINTER
4. Click on Start
5. Click on Printers & Faxes
6. Select Add Printer
7. Select Local Printer attached to computer
8. Select NO when prompted to automatically detect and install my Plug + Play printer as shown below.

## Add Printer Wizard

### Local or Network Printer

The wizard needs to know which type of printer to set up.



Select the option that describes the printer you want to use:

- Local printer attached to this computer
  - Automatically detect and install my Plug and Play printer
- A network printer, or a printer attached to another computer



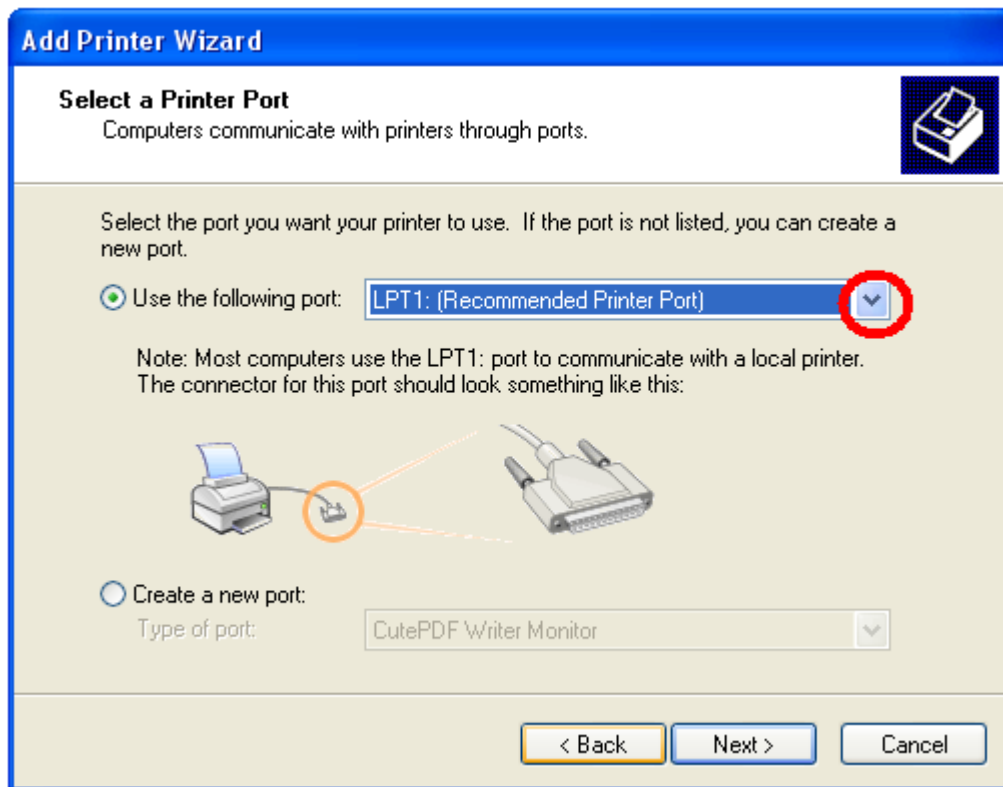
To set up a network printer that is not attached to a print server, use the "Local printer" option.

< Back

Next >

Cancel

9. Select the correct port in the “Use the following printer port” prompt



## Add Printer Wizard

### Select a Printer Port

Computers communicate with printers through ports.



Select the port you want your printer to use. If the port is not listed, you can create a new port.

Use the following port:

LPT1: (Recommended Printer Port)

Note: Most computers use the connector for this port.



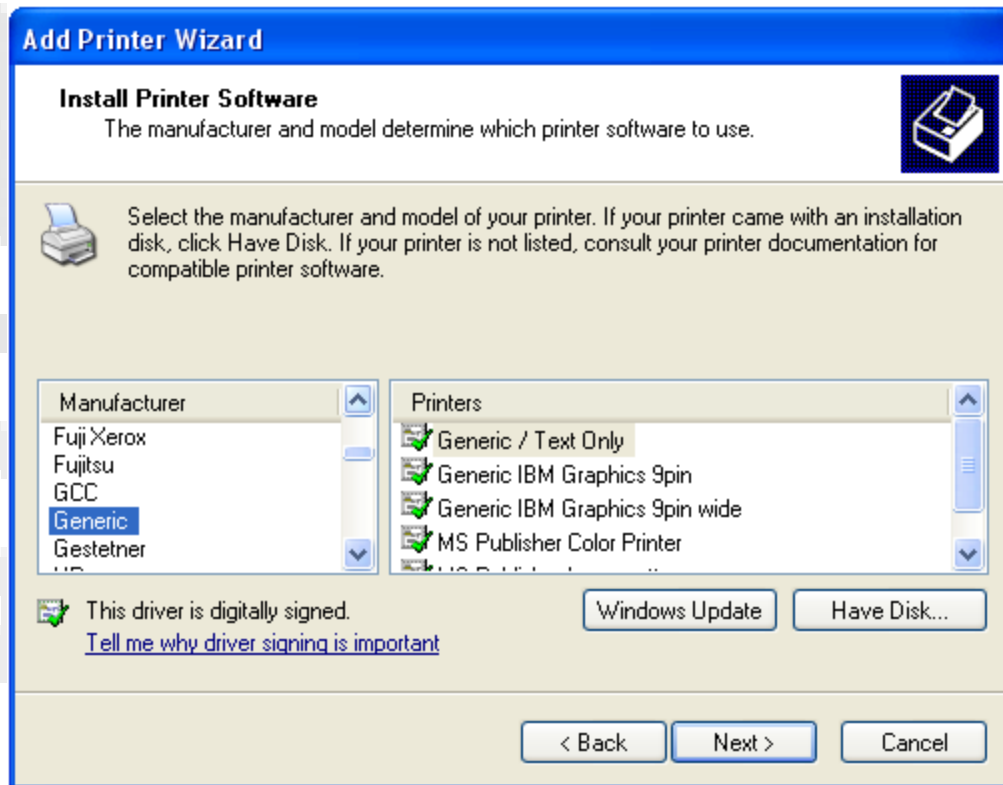
Create a new port:

Type of port:

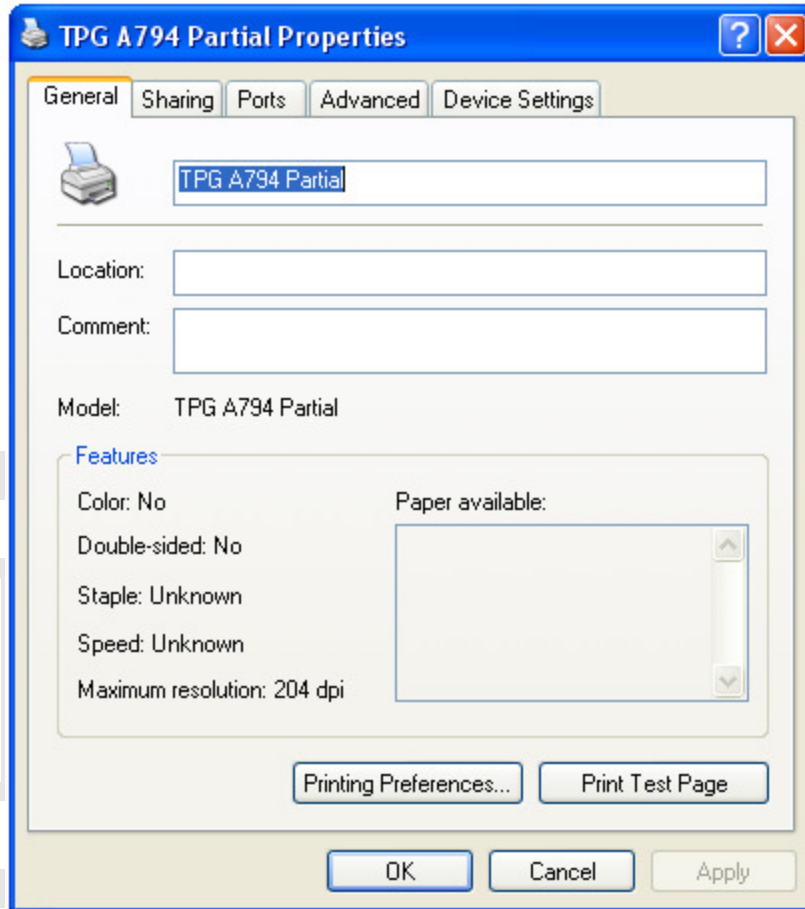
LPT1: (Recommended Printer Port)  
LPT2: (Printer Port)  
LPT3: (Printer Port)  
COM1: (Serial Port)  
COM2: (Serial Port)  
COM3: (Serial Port)  
COM4: (Serial Port)  
FILE: (Print to File)  
\\CASH\HPLaserJ (Local Port)  
\\DONNA\kds (Local Port)  
\\DONNA\KitchenP (Local Port)  
\\DONNA\tech-hp (Local Port)  
\\HACIENDASERVER\Kitchen Printer (Local Port)  
\\HIDEAWAYSERVER\Kitchen Printer (Local Port)  
\\HOME-9521CF5C36\Kitchen Printer (Local Port)  
\\HUSSAINSERVER\Kitchen Printer (Local Port)  
\\HUSSAINSERVER\_2\Kitchen Printer (Local Port)  
\\KWIKSHOPSERVER\Kitchen Printer (Local Port)  
\\MICHAELWALL\KDS (Local Port)  
\\MICHAELWALL\KitchenPrinter (Local Port)  
\\PDS\EPSONTM- (Local Port)  
\\SERVER1\hpphotos (Local Port)  
\\SERVER1\tech-hp (Local Port)  
\\STEPHENSERVER\BAR Printer (Local Port)  
\\STEPHENSERVER\Kitchen Printer (Local Port)  
\\STORMSEVER\KitchenPrinter (Local Port)  
CPW2: (CutePDF Writer)  
Send To Microsoft OneNote Port: (Local Port)  
XPSPort: (Local Port)

Cancel

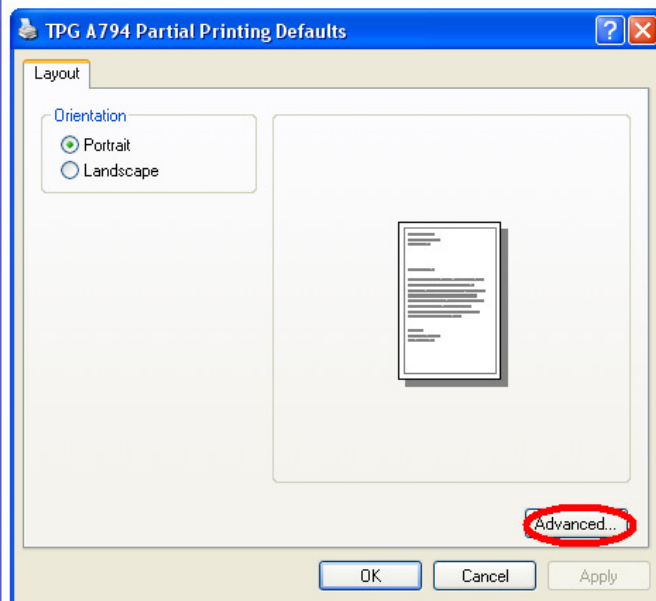
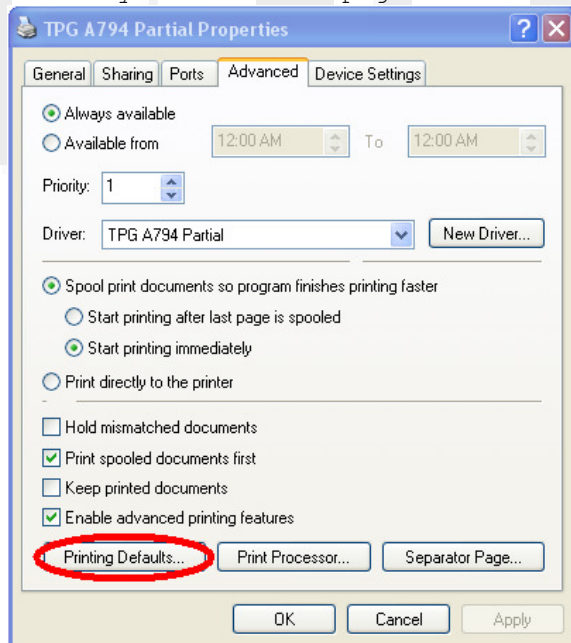
10. The Add Printer Wizard will appear. Select Generic and Generic/Text only as shown in the following screen example:

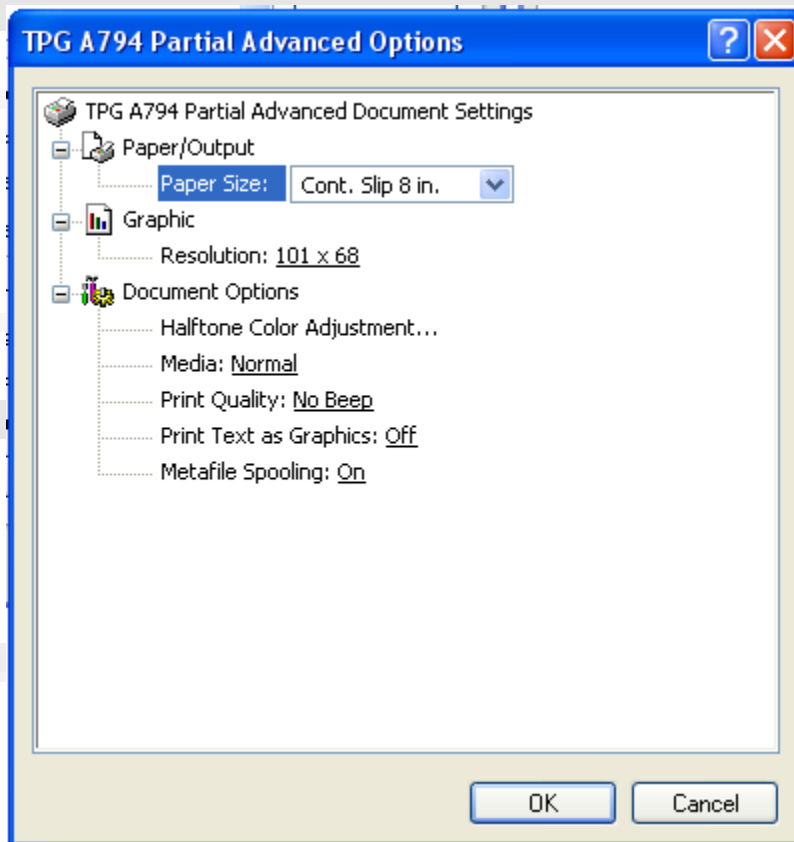


11. If prompted whether to keep an existing printer driver, respond with Yes.
12. Enter the name of your receipt printer: Epson, Star, Citizen.
13. Enter No when asked whether this printer is to be your default printer.
14. Select Don't Share when asked whether you want this printer to be shared or not.
15. Select No test page when asked whether you want to print a test page.
16. Right-click on the new Receipt Printer icon and select Properties. You will see a dialog box that is similar to the one shown below.



17. Click on Printing Defaults and then click on Paper/Quality. You will see a dialog box similar to the one below this paragraph. Select Cont Feed - No Break in the Paper Source prompt. This will ensure that your receipts do not have any artificial "page breaks".



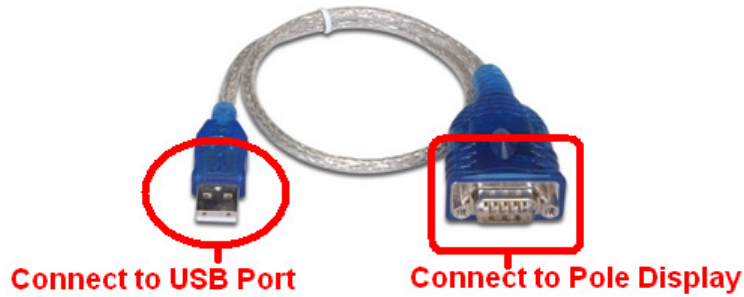


18. Click on Ok. When back in the Properties dialog box, click on Apply | Ok. You are done.

### **Connecting your Pole Display**

Refer to your POS user's manual found as a PDF on your windows desktop on the POS PC, or as a video online via youtube (search for Rescue Geeks), our website, or the software manufacturers website.

Your pole display may come with a Serial Connection Cable (9 holes DB9 Female) that shall either connect to one of your onboard (on motherboard) Serial ports (9 pins DB9M) or via a USB to serial Converter Cable. Check the diagram taped to your POS PC to see where the Pole Display is configured for prior to shipping. Each device, such as printer pole display or touchscreen is tagged with a color coded label that corresponds to a USB port number, or DB9M COM port number.

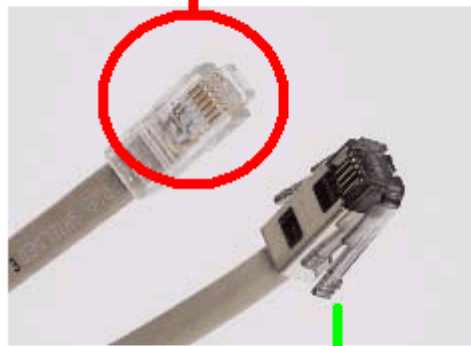


### Connecting your Cash Drawer

There will be a short cable (shown in the figures below) coming from the rear of the cash drawer. Uncoil this cable. It will have a male RJ14 (looks like a phone plug) at its end. Connect this to the small female receptacle at the bottom or rear of the receipt printer. Ensure that the printer is on, and in a ready mode, the cash drawer can only be opened by a key, automatically when a receipt is printed, or via the open cash drawer command in the managers menu in most of our POS programs.



Connect to Printer



Connect to Cash Drawer

### Connecting your Weight Scale:

1. Remove the weight scale from the packing materials.
2. Connect the Serial Connection Cable (9 holes DB9 Female) to the **COM 1** port on your PC when PC is OFF.
3. Connect the power.